

ATSSB Bass Trombone Scales

Scales should be performed as written and may or may not be performed connected. All scales are to be played at a minimum of $\text{♩} = 120$

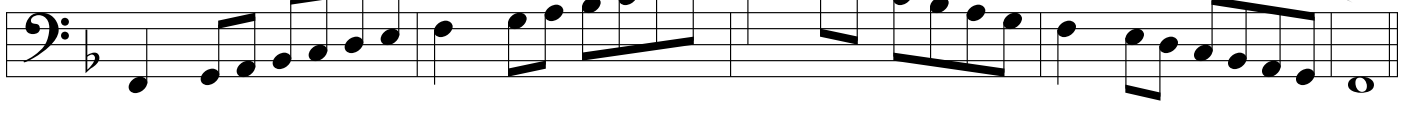
1. G Major Scale



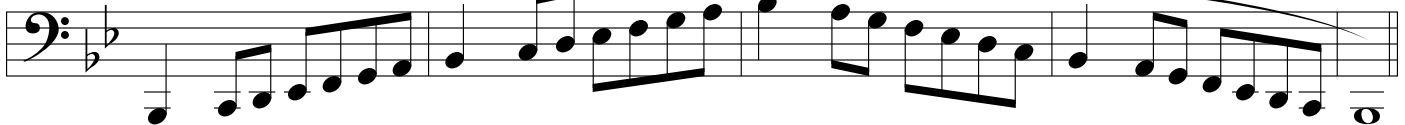
2. C Major Scale



3. F Major Scale



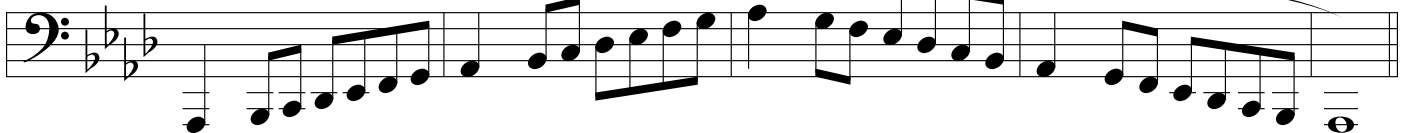
4. B \flat Major Scale



5. E \flat Major Scale



6. A \flat Major Scale



7. D \flat Major Scale



8. Chromatic Scale

