

# ATSSB B<sup>b</sup> Bass & Contra Clarinet

## Scales

All scales are to be played at a minimum of ♩ = 120

### 1. Concert G (written A) Major Scale



### 2. Concert C (written D) Major Scale



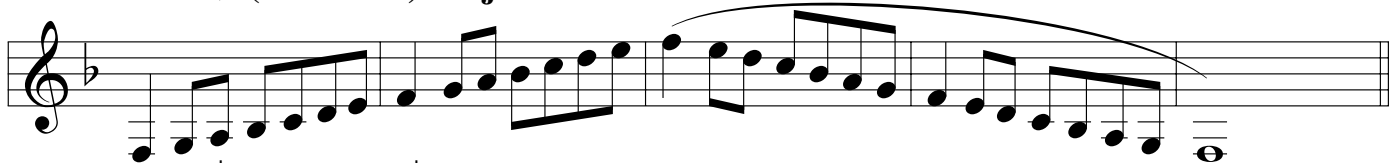
### 3. Concert F (written G) Major Scale



### 4. Concert B<sup>b</sup> (written C) Major Scale



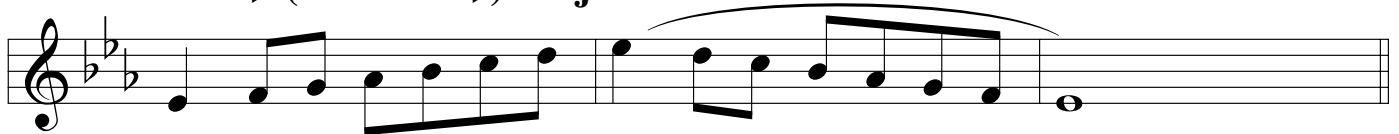
### 5. Concert E<sup>b</sup> (written F) Major Scale



### 6. Concert A<sup>b</sup> (written B<sup>b</sup>) Major Scale



### 7. Concert D<sup>b</sup> (written E<sup>b</sup>) Major Scale



### 8. Chromatic Scale

