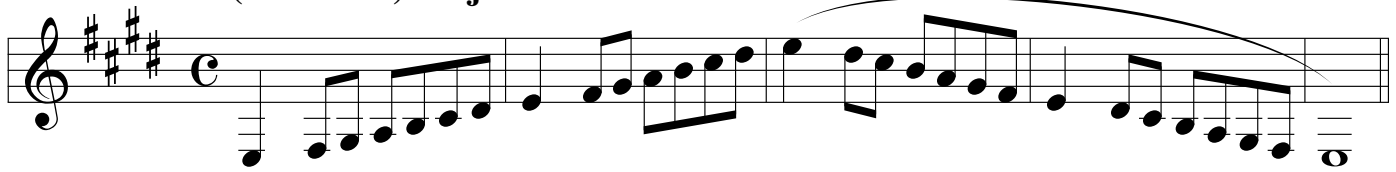


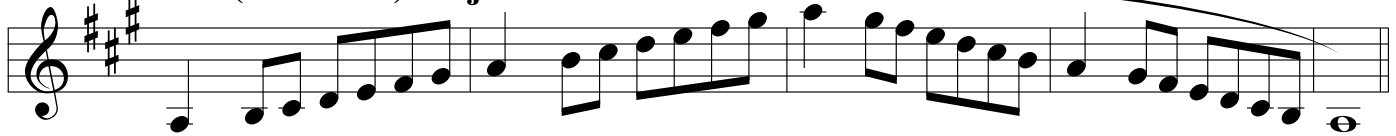
# ATSSB Eb Alto & Contra Clarinet Scales

Scales should be performed as written and may or may not be performed connected. All scales are to be played at a minimum of  $\text{♩} = 120$

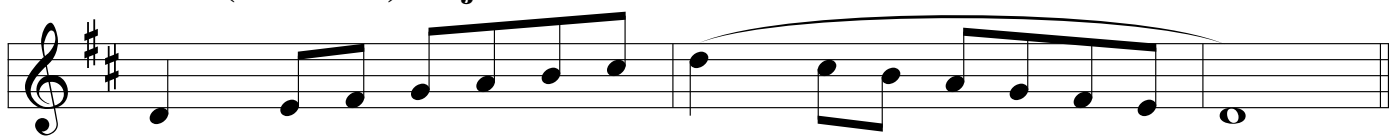
## 1. Concert G (written E) Major Scale



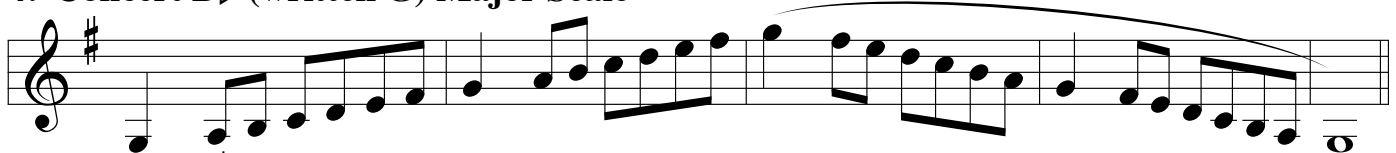
## 2. Concert C (written A) Major Scale



## 3. Concert F (written D) Major Scale



## 4. Concert Bb (written G) Major Scale



## 5. Concert Eb (written C) Major Scale



## 6. Concert Ab (written F) Major Scale



## 7. Concert Db (written Bb) Major Scale



## 8. Chromatic Scale

