

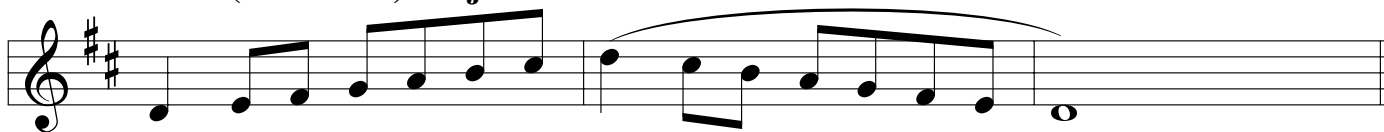
ATSSB Cornet-Trumpet Scales

All scales are to be played at a minimum of $\text{♩} = 120$

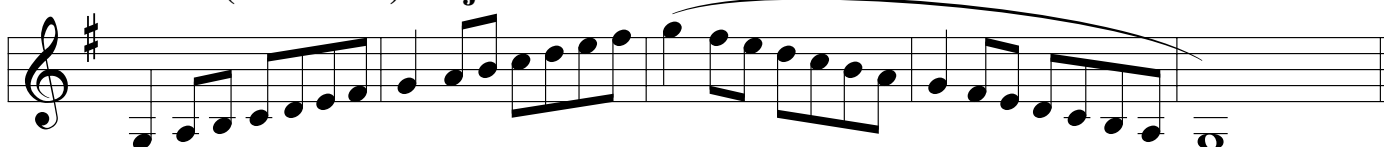
1. Concert G (written A) Major Scale



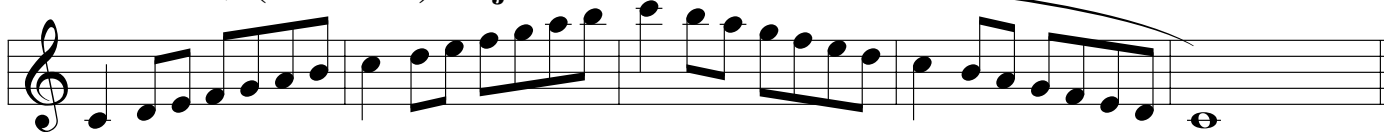
2. Concert C (written D) Major Scale



3. Concert F (written G) Major Scale



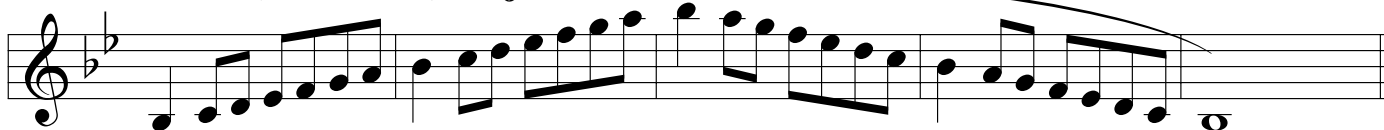
4. Concert B \flat (written C) Major Scale



5. Concert E \flat (written F) Major Scale



6. Concert A \flat (written B \flat) Major Scale



7. Concert D \flat (written E \flat) Major Scale



8. Chromatic Scale

