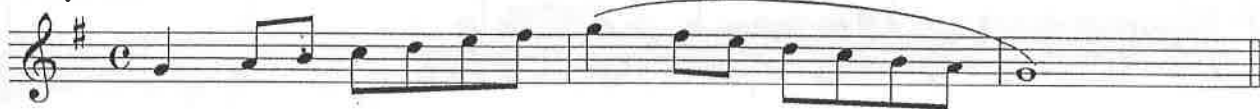


# ATSSB Region 7 EZ Middle School Flute Scales

All Scales are to be played at a minimum of  $\text{♩} = 90$

G Major Scale



C Major Scale



F Major Scale



Bb Major Scale



Eb Major Scale



Ab Major Scale



Db Major scale



Chromatic Scale



# ATSSB Region 7 EZ Middle School Oboe Scales

All Scales are to be played at a minimum of  $\text{♩} = 90$

G Major Scale



C Major Scale



F Major Scale



Bb Major Scale



Eb Major Scale



Ab Major Scale



Db Major Scale



Chromatic Scale



# ATSSB Region 7 EZ Middle School Bassoon Scales

All Scales are to be played at a minimum of  $\text{♩} = 90$

G Major Scale

Musical notation for the G Major Scale in bass clef, common time. The scale is written in two lines: the first line contains the ascending scale (G2, A2, B2, C3, D3, E3, F#3, G3) and the second line contains the descending scale (F#3, E3, D3, C3, B2, A2, G2). A slur covers the entire scale.

C Major Scale

Musical notation for the C Major Scale in bass clef, common time. The scale is written in two lines: the first line contains the ascending scale (C2, D2, E2, F2, G2, A2, B2, C3) and the second line contains the descending scale (B2, A2, G2, F2, E2, D2, C2). A slur covers the entire scale.

F Major Scale

Musical notation for the F Major Scale in bass clef, common time. The scale is written in two lines: the first line contains the ascending scale (F2, G2, A2, Bb2, C3, D3, E3, F3) and the second line contains the descending scale (E3, D3, C3, Bb2, A2, G2, F2). A slur covers the entire scale.

Bb Major Scale

Musical notation for the Bb Major Scale in bass clef, common time. The scale is written in two lines: the first line contains the ascending scale (Bb1, C2, D2, Eb2, F2, G2, Ab2, Bb2) and the second line contains the descending scale (Ab2, G2, F2, Eb2, D2, C2, Bb1). A slur covers the entire scale.

Eb Major Scale

Musical notation for the Eb Major Scale in bass clef, common time. The scale is written in two lines: the first line contains the ascending scale (Eb1, F2, G2, Ab2, Bb2, C3, D3, Eb3) and the second line contains the descending scale (D3, C3, Bb2, Ab2, G2, F2, Eb1). A slur covers the entire scale.

Ab Major Scale

Musical notation for the Ab Major Scale in bass clef, common time. The scale is written in two lines: the first line contains the ascending scale (Ab1, Bb1, C2, D2, Eb2, F2, G2, Ab2) and the second line contains the descending scale (G2, F2, Eb2, D2, C2, Bb1, Ab1). A slur covers the entire scale.

Db Major Scale

Musical notation for the Db Major Scale in bass clef, common time. The scale is written in two lines: the first line contains the ascending scale (Db1, Eb1, F2, G2, Ab2, Bb2, C3, Db3) and the second line contains the descending scale (Cb3, Bb2, Ab2, G2, F2, Eb1, Db1). A slur covers the entire scale.

Chromatic Scale

Musical notation for the Chromatic Scale in bass clef, common time. The scale is written in two lines: the first line contains the ascending chromatic scale (C2, C#2, D2, D#2, E2, E#2, F2, F#2, G2, G#2, A2, A#2, B2, B#2, C3) and the second line contains the descending chromatic scale (B2, Bb2, Ab2, Abb2, G2, Gb2, F2, Fb2, E2, Eb2, D2, Db2, C2, Cb2, B1, Bbb1). A slur covers the entire scale.

# ATSSB Region 7 EZ Middle School Clarinet Scales

All Scales are to be played at a minimum of  $\text{♩} = 90$

Concert G (written A) Major Scale



Concert C (written D) Major Scale



Concert F (written G) Major Scale



Concert Bb (written C) Major Scale



Concert Eb (written F) Major Scale



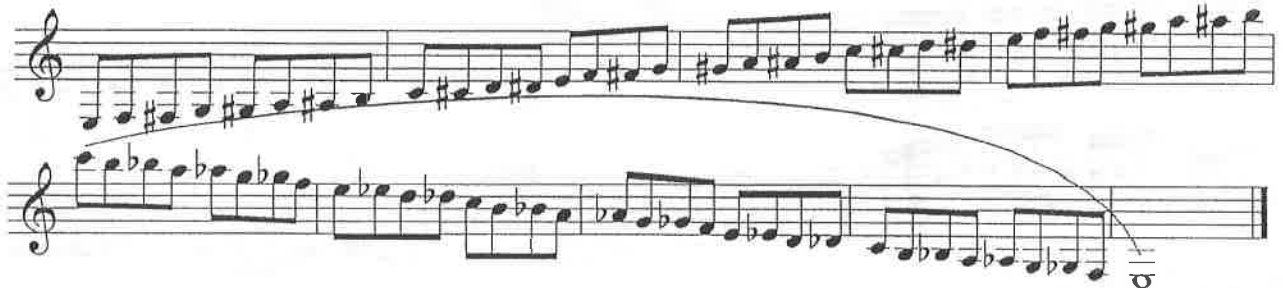
Concert Ab (written Bb) Major Scale



Concert Db (written Eb) Major Scale



Chromatic Scale



# ATSSB Region 7 EZ Middle School Bass Clarinet Scales

All Scales are to be played at a minimum of  $\text{♩} = 90$

Concert G (written A) Major Scale



Concert C (written D) Major Scale



Concert F (written G) Major Scale



Concert Bb (written C) Major Scale



Concert Eb (written F) Major Scale



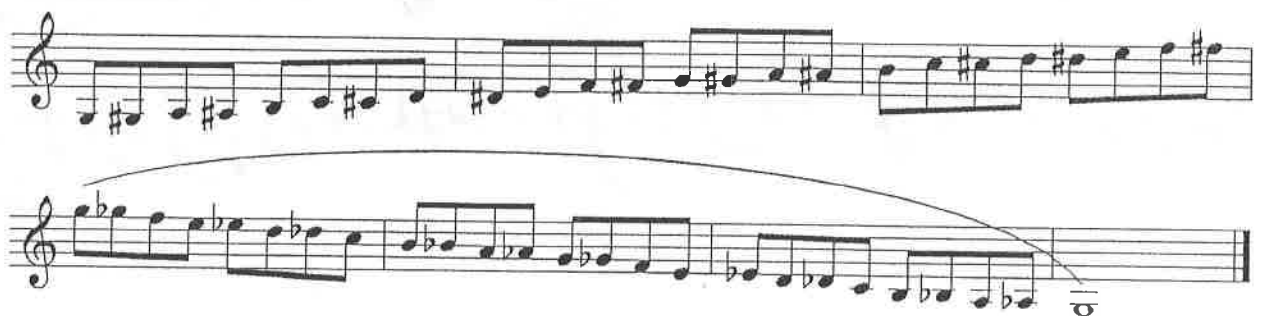
Concert Ab (written Bb) Major Scale



Concert Db (written Eb) Major Scale



Chromatic Scale



# ATSSB Region 7 EZ Middle School Alto and Bari Sax Scales

All Scales are to be played at a minimum of  $\text{♩} = 90$

Concert G (written E) Major Scale



Concert C (written A) Major Scale



Concert F (written D) Major Scale



Concert Bb (written G) Major Scale



Concert Eb (written C) Major Scale



Concert Ab (written F) Major Scale



Concert Db (written Bb) Major Scale



Chromatic Scale



# ATSSB Region 7 EZ Middle School Tenor Saxophone Scales

All Scales are to be played at a minimum of ♩ = 90

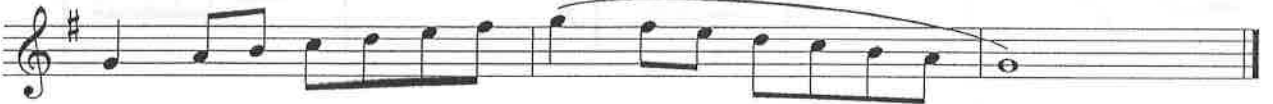
Concert G (written A) Major Scale



Concert C (written D) Major Scale



Concert F (written G) Major Scale



Concert Bb (written C) Major Scale



Concert Eb (written F) Major Scale



Concert Ab (written Bb) Major Scale



Concert Db (written Eb) Major Scale



Chromatic Scale



# ATSSB Region 7 EZ Middle School French Horn Scales

All Scales are to be played at a minimum of  $\text{♩} = 90$

Concert G (written D) Major Scale



Concert C (written G) Major Scale



Concert F (written C) Major Scale



Concert Bb (written F) Major Scale



Concert Eb (written Bb) Major Scale



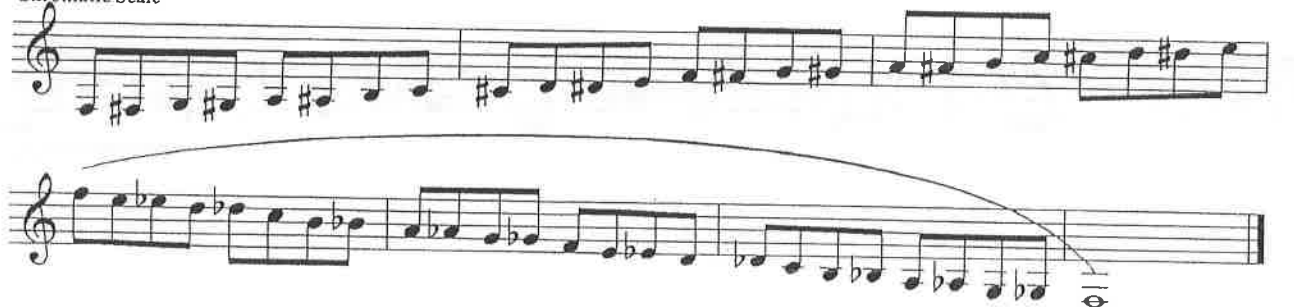
Concert Ab (written Eb) Major Scale



Concert Db (written Ab) Major Scale



Chromatic Scale





# ATSSB Region 7 EZ Middle School Trumpet Scales

All Scales are to be played at a minimum of  $\text{♩} = 90$

Concert G (written A) Major Scale



Concert C (written D) Major Scale



Concert F (written G) Major Scale



Concert Bb (written C) Major Scale



Concert Eb (written F) Major Scale



Concert Ab (written Bb) Major Scale



Concert Db (written Eb) Major Scale



Chromatic Scale



# ATSSB Region 7 EZ Middle School Trombone and Baritone Scales

All Scales are to be played at a minimum of  $\text{♩} = 90$

G Major Scale

Musical notation for the G Major Scale in bass clef, 4/4 time. The scale is written on a single staff with a treble clef. It starts on G4 and ends on G4. The notes are G, A, B, C, D, E, F#, G, A, B, C, D, E, F#, G. A slur covers the entire scale.

C Major Scale

Musical notation for the C Major Scale in bass clef, 4/4 time. The scale is written on a single staff with a treble clef. It starts on C4 and ends on C4. The notes are C, D, E, F, G, A, B, C, D, E, F, G, A, B, C. A slur covers the entire scale.

F Major Scale

Musical notation for the F Major Scale in bass clef, 4/4 time. The scale is written on a single staff with a treble clef. It starts on F3 and ends on F4. The notes are F, G, A, Bb, C, D, E, F, G, A, Bb, C, D, E, F. A slur covers the entire scale.

Bb Major Scale

Musical notation for the Bb Major Scale in bass clef, 4/4 time. The scale is written on a single staff with a treble clef. It starts on Bb3 and ends on Bb4. The notes are Bb, C, D, Eb, F, G, A, Bb, C, D, Eb, F, G, A, Bb. A slur covers the entire scale.

Eb Major Scale

Musical notation for the Eb Major Scale in bass clef, 4/4 time. The scale is written on a single staff with a treble clef. It starts on Eb3 and ends on Eb4. The notes are Eb, F, G, Ab, Bb, C, D, Eb, F, G, Ab, Bb, C, D, Eb. A slur covers the entire scale.

Ab Major Scale

Musical notation for the Ab Major Scale in bass clef, 4/4 time. The scale is written on a single staff with a treble clef. It starts on Ab3 and ends on Ab4. The notes are Ab, Bb, C, Db, Eb, F, G, Ab, Bb, C, Db, Eb, F, G, Ab. A slur covers the entire scale.

Db Major Scale

Musical notation for the Db Major Scale in bass clef, 4/4 time. The scale is written on a single staff with a treble clef. It starts on Db3 and ends on Db4. The notes are Db, Eb, F, Gb, Ab, Bb, C, Db, Eb, F, Gb, Ab, Bb, C, Db. A slur covers the entire scale.

Chromatic Scale

Musical notation for the Chromatic Scale in bass clef, 4/4 time. The scale is written on two staves with a treble clef. The first staff shows the ascending scale from C4 to C5: C, C#, D, D#, E, E#, F, F#, G, G#, A, A#, B, B#, C. The second staff shows the descending scale from C5 to C4: C, B, Bb, Ab, G, F, Fb, Eb, D, C, Bb, Ab, G, F, E, D, C. A slur covers the entire scale.

# ATSSB Region 7 EZ Middle School Tuba Scales

All Scales are to be played at a minimum of  $\text{♩} = 90$

G Major Scale

Musical notation for the G Major Scale in bass clef, common time. The scale is written in two lines: an ascending line and a descending line. The key signature has one sharp (F#). The descending line is marked with a fermata and a double bar line.

C Major Scale

Musical notation for the C Major Scale in bass clef, common time. The scale is written in two lines: an ascending line and a descending line. The key signature has no sharps or flats. The descending line is marked with a fermata and a double bar line.

F Major Scale

Musical notation for the F Major Scale in bass clef, common time. The scale is written in two lines: an ascending line and a descending line. The key signature has one flat (Bb). The descending line is marked with a fermata and a double bar line.

Bb Major Scale

Musical notation for the Bb Major Scale in bass clef, common time. The scale is written in two lines: an ascending line and a descending line. The key signature has two flats (Bb, Eb). The descending line is marked with a fermata and a double bar line.

Eb Major Scale

Musical notation for the Eb Major Scale in bass clef, common time. The scale is written in two lines: an ascending line and a descending line. The key signature has three flats (Bb, Eb, Ab). The descending line is marked with a fermata and a double bar line.

Ab Major Scale

Musical notation for the Ab Major Scale in bass clef, common time. The scale is written in two lines: an ascending line and a descending line. The key signature has four flats (Bb, Eb, Ab, Db). The descending line is marked with a fermata and a double bar line.

Concert Db Scale

Musical notation for the Concert Db Scale in bass clef, common time. The scale is written in two lines: an ascending line and a descending line. The key signature has five flats (Bb, Eb, Ab, Db, Gb). The descending line is marked with a fermata and a double bar line.

Chromatic Scale

Musical notation for the Chromatic Scale in bass clef, common time. The scale is written in two lines: an ascending line and a descending line. The ascending line consists of half notes with sharps, and the descending line consists of half notes with flats. The descending line is marked with a fermata and a double bar line.