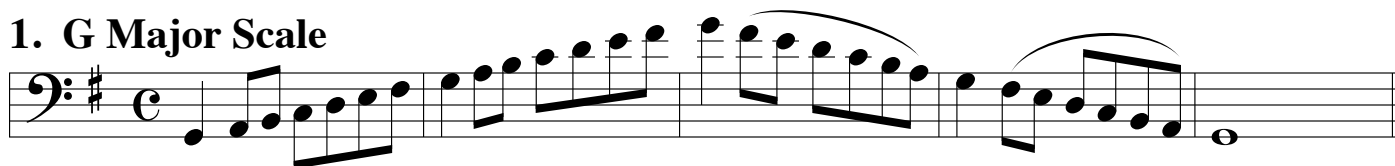


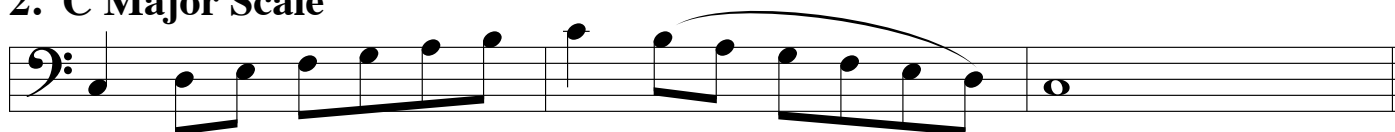
ATSSB Double Bass Scales

Scales should be performed as written and may or may not be performed connected. All scales are to be played at a minimum of ♩ = 120.
Scales should be performed in order without delay between scales.

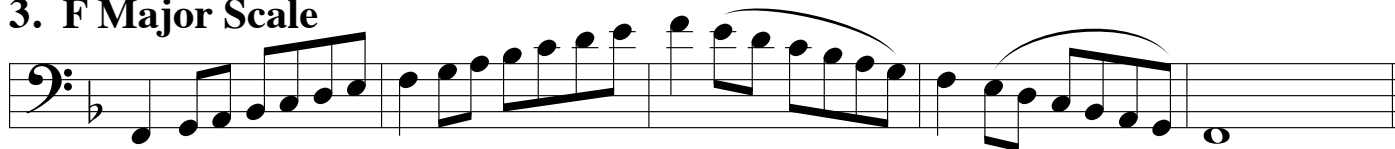
1. G Major Scale



2. C Major Scale



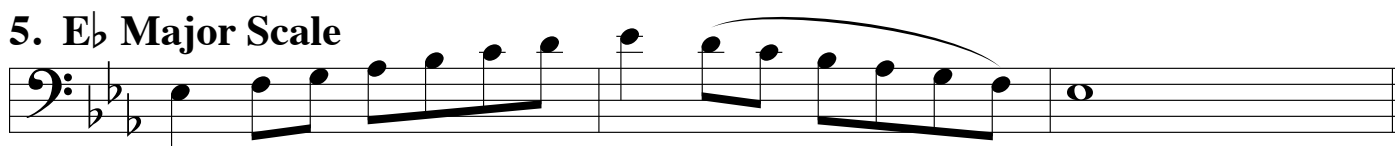
3. F Major Scale



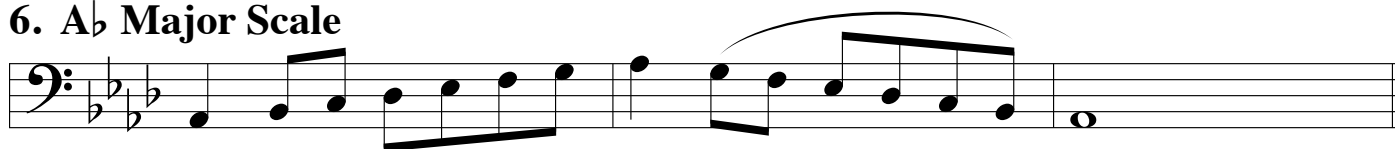
4. Bb Major Scale



5. Eb Major Scale



6. Ab Major Scale



7. Db Major Scale



8. Chromatic Scale

