

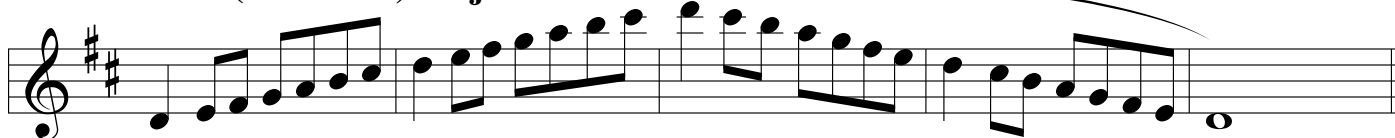
# ATSSB B $\flat$ Tenor Saxophone Scales

Scales should be performed as written and may or may not be performed connected. All scales are to be played at a minimum of  $\text{♩} = 120$ .  
Scales should be performed in order without delay between scales.

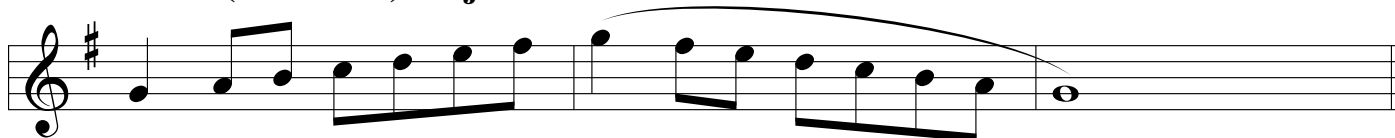
## 1. Concert G (written A) Major Scale



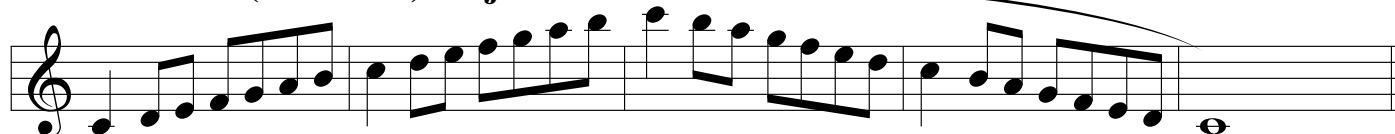
## 2. Concert C (written D) Major Scale



## 3. Concert F (written G) Major Scale



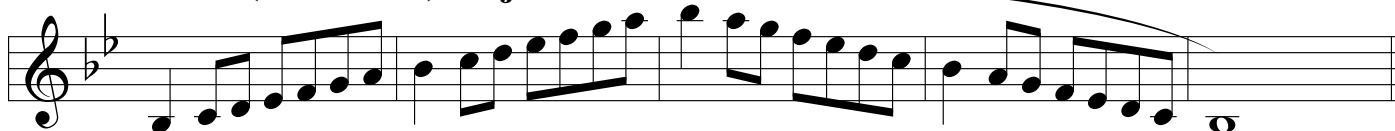
## 4. Concert B $\flat$ (written C) Major Scale



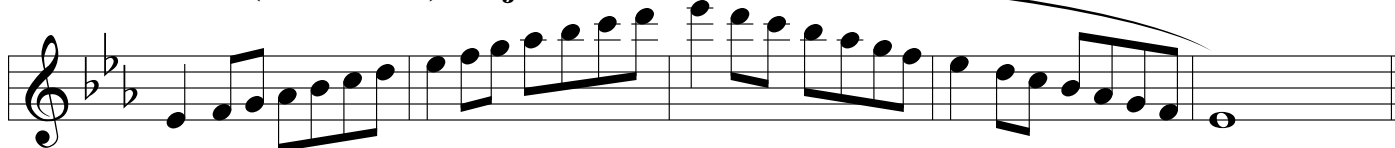
## 5. Concert E $\flat$ (written F) Major Scale



## 6. Concert A $\flat$ (written B $\flat$ ) Major Scale



## 7. Concert D $\flat$ (written E $\flat$ ) Major Scale



## 8. Chromatic Scale

