

Region 9 ATSSB Middle School Scales

1. G-Major Scale

Musical notation for the G-Major Scale in 4/4 time. The scale is written on a single staff in treble clef with a key signature of one sharp (F#). It consists of an ascending line of eighth notes and a descending line of eighth notes, with a final whole note G. A slur covers the entire scale.

2. C Major Scale

Musical notation for the C Major Scale in 4/4 time. The scale is written on a single staff in treble clef with a key signature of no sharps or flats. It consists of an ascending line of eighth notes and a descending line of eighth notes, with a final whole note C. A slur covers the entire scale.

3. F Major Scale

Musical notation for the F Major Scale in 4/4 time. The scale is written on a single staff in treble clef with a key signature of one flat (Bb). It consists of an ascending line of eighth notes and a descending line of eighth notes, with a final whole note F. A slur covers the entire scale.

4. B-Flat Major Scale

Musical notation for the B-Flat Major Scale in 4/4 time. The scale is written on a single staff in treble clef with a key signature of two flats (Bb, Eb). It consists of an ascending line of eighth notes and a descending line of eighth notes, with a final whole note Bb. A slur covers the entire scale.

5. E-Flat Major Scale

Musical notation for the E-Flat Major Scale in 4/4 time. The scale is written on a single staff in treble clef with a key signature of three flats (Bb, Eb, Ab). It consists of an ascending line of eighth notes and a descending line of eighth notes, with a final whole note Eb. A slur covers the entire scale.

6. A-Flat Major Scale

Musical notation for the A-Flat Major Scale in 4/4 time. The scale is written on a single staff in treble clef with a key signature of four flats (Bb, Eb, Ab, Db). It consists of an ascending line of eighth notes and a descending line of eighth notes, with a final whole note Ab. A slur covers the entire scale.

7. D-Flat Major Scale

Musical notation for the D-Flat Major Scale in 4/4 time. The scale is written on a single staff in treble clef with a key signature of five flats (Bb, Eb, Ab, Db, Gb). It consists of an ascending line of eighth notes and a descending line of eighth notes, with a final whole note Db. A slur covers the entire scale.

8. Chromatic Scale

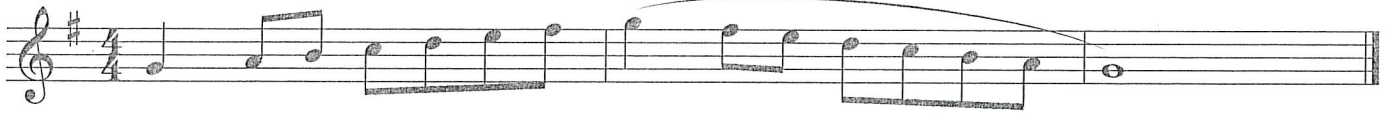
Musical notation for the ascending part of the Chromatic Scale in 4/4 time. The scale is written on a single staff in treble clef. It consists of a series of eighth notes moving up chromatically from C to B.

Musical notation for the descending part of the Chromatic Scale in 4/4 time. The scale is written on a single staff in treble clef. It consists of a series of eighth notes moving down chromatically from B to C. A slur covers the entire chromatic scale.

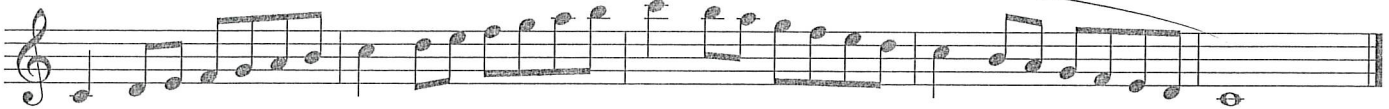
Oboe

Region 9 ATSSB Middle School Scales

1. G Major Scale



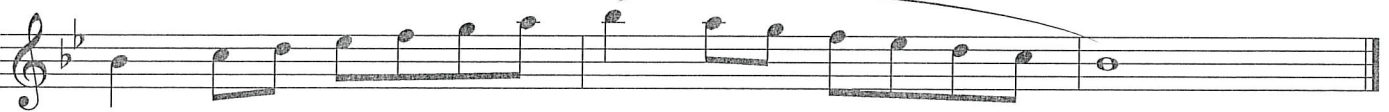
2. C Major Scale



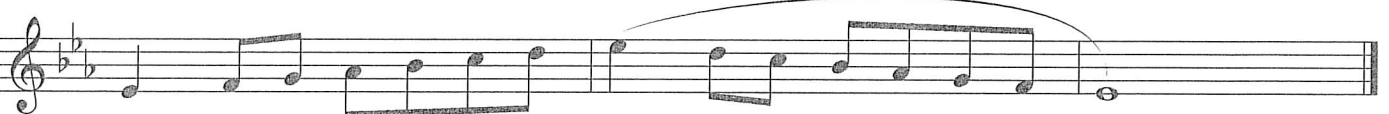
3. F Major Scale



4. Bb Major Scale



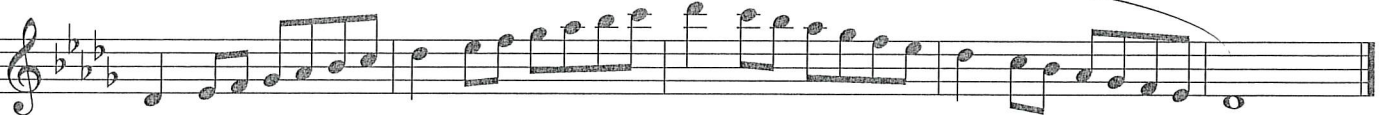
5. Eb Major Scale



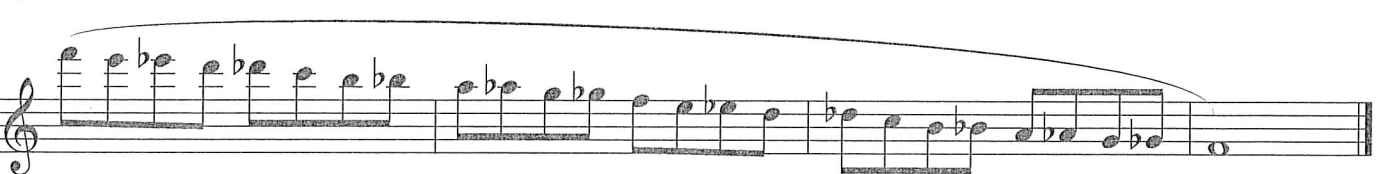
6. Ab Major Scale



7. Db Major Scale



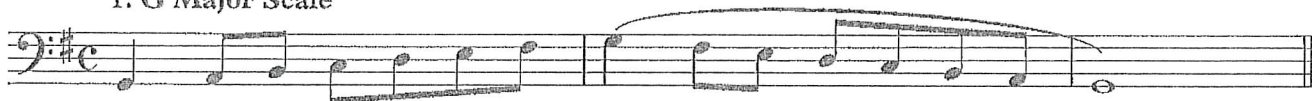
8. Chromatic Scale



Region 9 ATSSB Middle School Scales

Bassoon

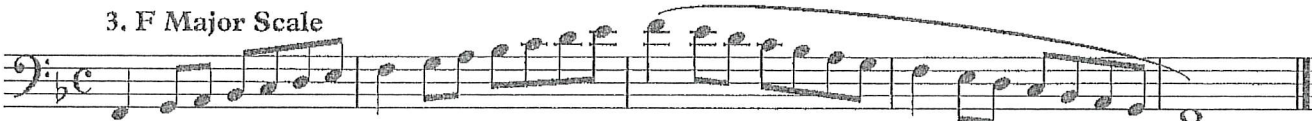
1. G Major Scale



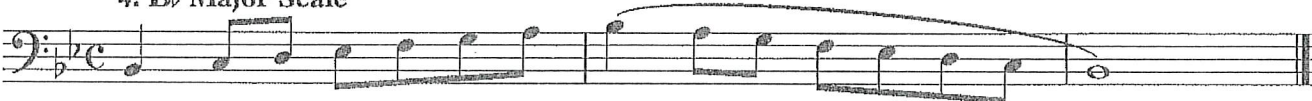
2. C Major Scale



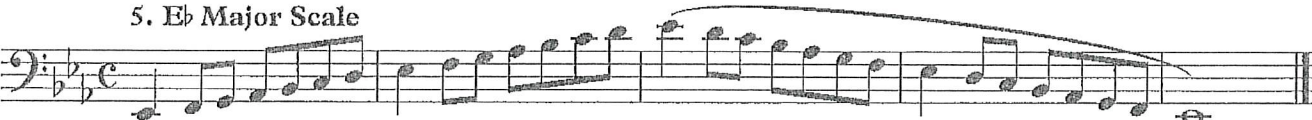
3. F Major Scale



4. Bb Major Scale



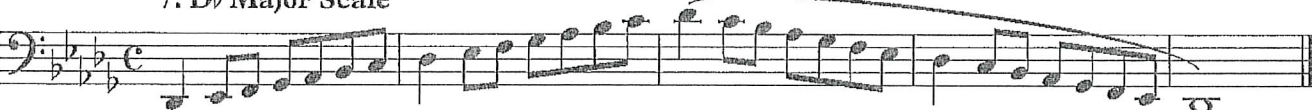
5. Eb Major Scale



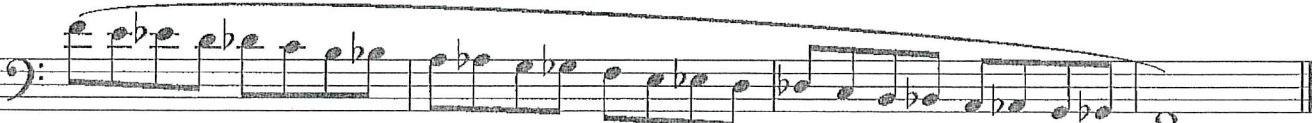
6. Ab Major Scale



7. Db Major Scale



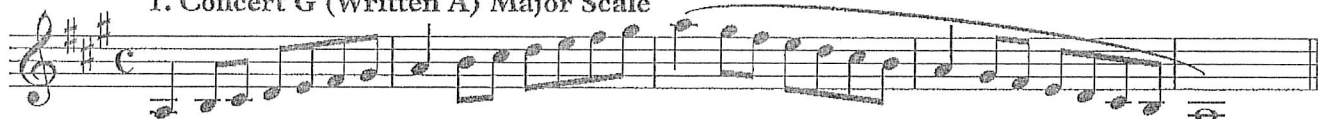
8. Chromatic Scale



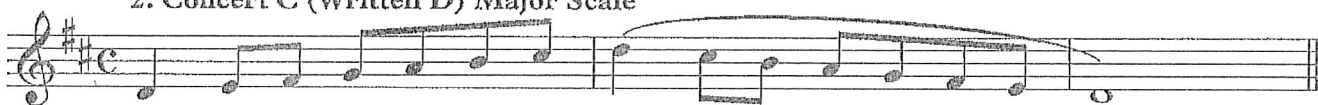
Region 9 ATSSB Middle School Scales

Clarinet in B \flat

1. Concert G (Written A) Major Scale



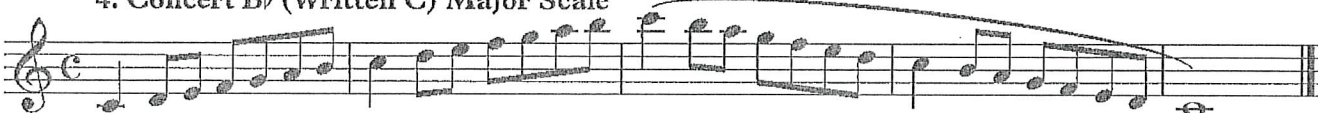
2. Concert C (Written D) Major Scale



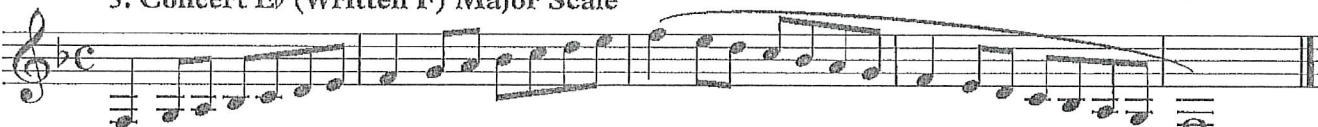
3. Concert F (Written G) Major Scale



4. Concert B \flat (Written C) Major Scale



5. Concert E \flat (Written F) Major Scale



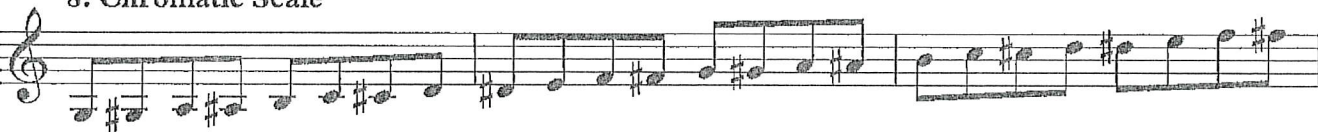
6. Concert A \flat (Written B \flat) Major Scale



7. Concert D \flat (Written E \flat) Major Scale



8. Chromatic Scale



Region 9 ATSSB Middle School Scales

Alto/Contralto Clarinet in E \flat

1. Concert G (Written E) Major Scale

Musical notation for the Concert G (Written E) Major Scale. The scale is written in treble clef with a key signature of three sharps (F#, C#, G#) and a common time signature (C). The melody consists of quarter notes ascending and descending, with a slur over the final two measures.

2. Concert C (Written A) Major Scale

Musical notation for the Concert C (Written A) Major Scale. The scale is written in treble clef with a key signature of two sharps (F#, C#) and a common time signature (C). The melody consists of quarter notes ascending and descending, with a slur over the final two measures.

3. Concert F (Written D) Major Scale

Musical notation for the Concert F (Written D) Major Scale. The scale is written in treble clef with a key signature of one sharp (F#) and a common time signature (C). The melody consists of quarter notes ascending and descending, with a slur over the final two measures.

4. Concert B \flat (Written G) Major Scale

Musical notation for the Concert B \flat (Written G) Major Scale. The scale is written in treble clef with a key signature of one sharp (F#) and a common time signature (C). The melody consists of quarter notes ascending and descending, with a slur over the final two measures.

5. Concert E \flat (Written C) Major Scale

Musical notation for the Concert E \flat (Written C) Major Scale. The scale is written in treble clef with a common time signature (C). The melody consists of quarter notes ascending and descending, with a slur over the final two measures.

6. Concert A \flat (Written F) Major Scale

Musical notation for the Concert A \flat (Written F) Major Scale. The scale is written in treble clef with a key signature of one flat (B \flat) and a common time signature (C). The melody consists of quarter notes ascending and descending, with a slur over the final two measures.

7. Concert D \flat (Written B \flat) Major Scale

Musical notation for the Concert D \flat (Written B \flat) Major Scale. The scale is written in treble clef with a key signature of two flats (B \flat , E \flat) and a common time signature (C). The melody consists of quarter notes ascending and descending, with a slur over the final two measures.

8. Chromatic Scale

Musical notation for the Chromatic Scale. The scale is written in treble clef with a common time signature (C). The melody consists of eighth notes ascending and descending, with a slur over the final two measures.

Musical notation for the Chromatic Scale (continued). The scale is written in treble clef with a common time signature (C). The melody consists of eighth notes ascending and descending, with a slur over the final two measures.

Region 9 ATSSB Middle School Scales

Bass/Contrabass Clarinet in B \flat

1. Concert G (Written A) Major Scale



2. Concert C (Written D) Major Scale



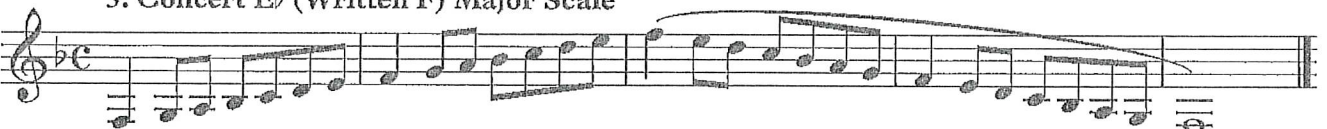
3. Concert F (Written G) Major Scale



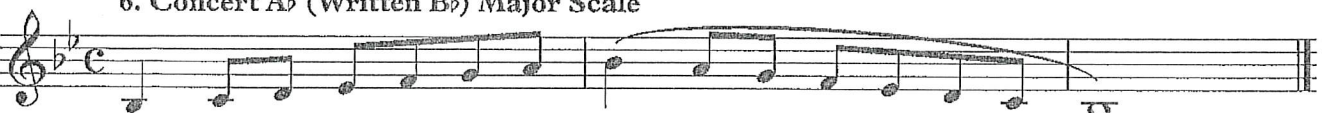
4. Concert B \flat (Written C) Major Scale



5. Concert E \flat (Written F) Major Scale



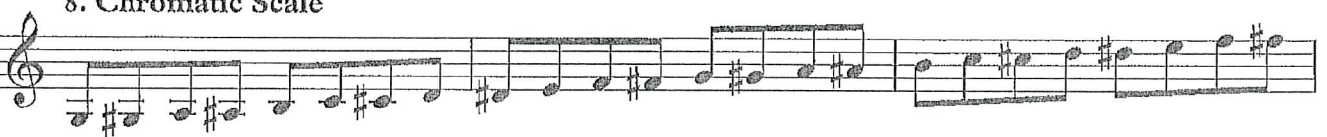
6. Concert A \flat (Written B \flat) Major Scale



7. Concert D \flat (Written E \flat) Major Scale



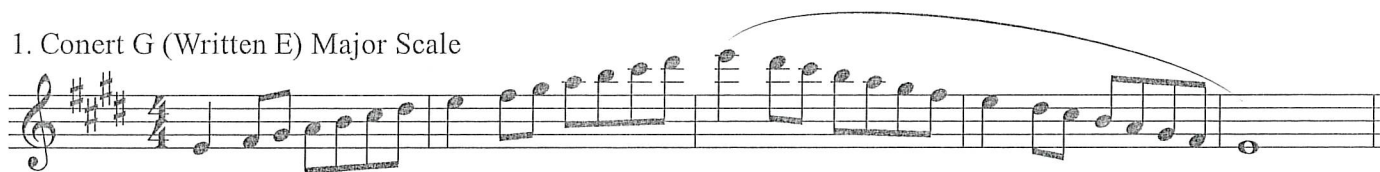
8. Chromatic Scale



Region 9 ATSSB Middle School Scales

Alto/Baritone Saxophone

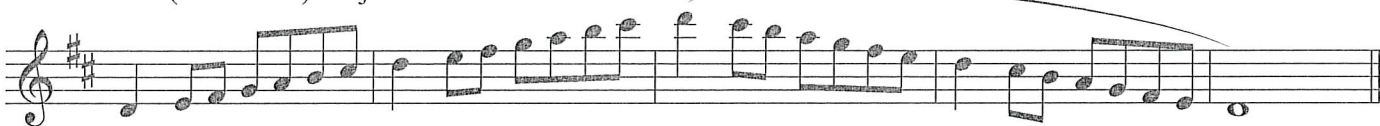
1. Concert G (Written E) Major Scale



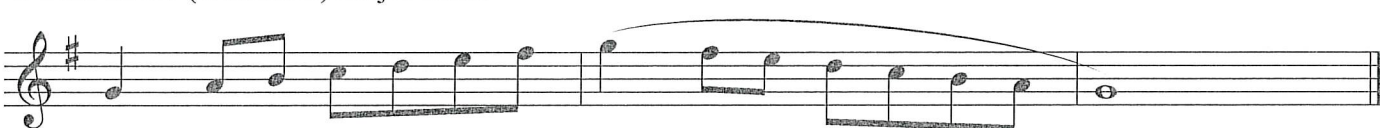
2. Concert C (Written A) Major Scale



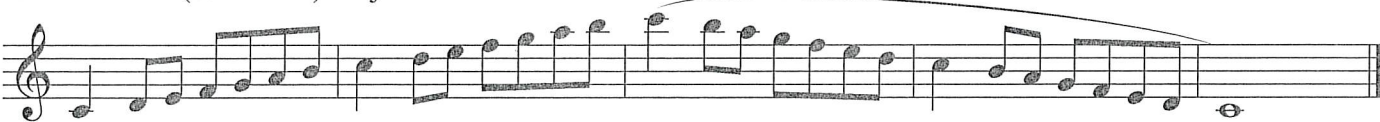
3. Concert F (Written D) Major Scale



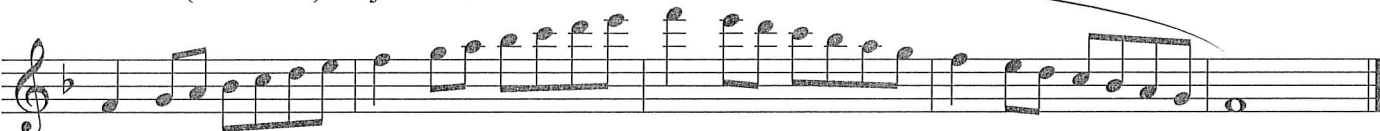
4. Concert Bb (Written G) Major Scale



5. Concert Eb (Written C) Major Scale



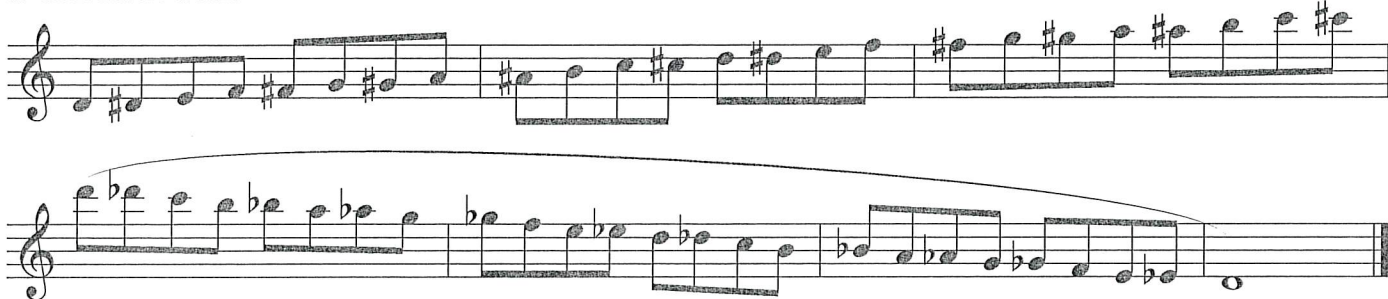
6. Concert Ab (Written F) Major Scale



7. Concert Db (Written Bb) Major Scale



8. Chromatic Scale



Region 9 ATSSB Middle School Scales

Tenor Sax

1. Concert G (Written A) Major Scale

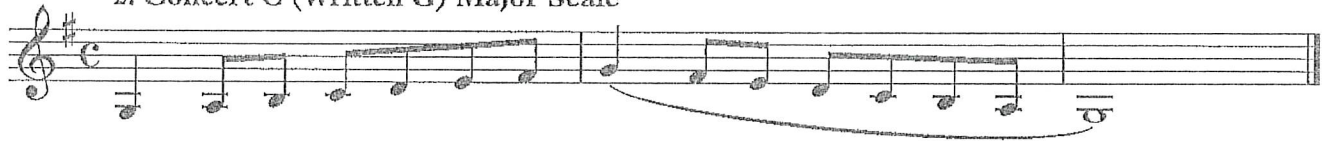
Musical notation for the Concert G (Written A) Major Scale. The scale is written in treble clef with a key signature of two sharps (F# and C#) and a 4/4 time signature. The notes are: A2, B2, C3, D3, E3, F#3, G3, A3, B3, C4, D4, E4, F#4, G4, A4, B4, C5, D5, E5, F#5, G5, A5, B5, C6, D6, E6, F#6, G6, A6, B6, C7, D7, E7, F#7, G7, A7, B7, C8, D8, E8, F#8, G8, A8, B8, C9, D9, E9, F#9, G9, A9, B9, C10, D10, E10, F#10, G10, A10, B10, C11, D11, E11, F#11, G11, A11, B11, C12, D12, E12, F#12, G12, A12, B12, C13, D13, E13, F#13, G13, A13, B13, C14, D14, E14, F#14, G14, A14, B14, C15, D15, E15, F#15, G15, A15, B15, C16, D16, E16, F#16, G16, A16, B16, C17, D17, E17, F#17, G17, A17, B17, C18, D18, E18, F#18, G18, A18, B18, C19, D19, E19, F#19, G19, A19, B19, C20, D20, E20, F#20, G20, A20, B20, C21, D21, E21, F#21, G21, A21, B21, C22, D22, E22, F#22, G22, A22, B22, C23, D23, E23, F#23, G23, A23, B23, C24, D24, E24, F#24, G24, A24, B24, C25, D25, E25, F#25, G25, A25, B25, C26, D26, E26, F#26, G26, A26, B26, C27, D27, E27, F#27, G27, A27, B27, C28, D28, E28, F#28, G28, A28, B28, C29, D29, E29, F#29, G29, A29, B29, C30, D30, E30, F#30, G30, A30, B30, C31, D31, E31, F#31, G31, A31, B31, C32, D32, E32, F#32, G32, A32, B32, C33, D33, E33, F#33, G33, A33, B33, C34, D34, E34, F#34, G34, A34, B34, C35, D35, E35, F#35, G35, A35, B35, C36, D36, E36, F#36, G36, A36, B36, C37, D37, E37, F#37, G37, A37, B37, C38, D38, E38, F#38, G38, A38, B38, C39, D39, E39, F#39, G39, A39, B39, C40, D40, E40, F#40, G40, A40, B40, C41, D41, E41, F#41, G41, A41, B41, C42, D42, E42, F#42, G42, A42, B42, C43, D43, E43, F#43, G43, A43, B43, C44, D44, E44, F#44, G44, A44, B44, C45, D45, E45, F#45, G45, A45, B45, C46, D46, E46, F#46, G46, A46, B46, C47, D47, E47, F#47, G47, A47, B47, C48, D48, E48, F#48, G48, A48, B48, C49, D49, E49, F#49, G49, A49, B49, C50, D50, E50, F#50, G50, A50, B50, C51, D51, E51, F#51, G51, A51, B51, C52, D52, E52, F#52, G52, A52, B52, C53, D53, E53, F#53, G53, A53, B53, C54, D54, E54, F#54, G54, A54, B54, C55, D55, E55, F#55, G55, A55, B55, C56, D56, E56, F#56, G56, A56, B56, C57, D57, E57, F#57, G57, A57, B57, C58, D58, E58, F#58, G58, A58, B58, C59, D59, E59, F#59, G59, A59, B59, C60, D60, E60, F#60, G60, A60, B60, C61, D61, E61, F#61, G61, A61, B61, C62, D62, E62, F#62, G62, A62, B62, C63, D63, E63, F#63, G63, A63, B63, C64, D64, E64, F#64, G64, A64, B64, C65, D65, E65, F#65, G65, A65, B65, C66, D66, E66, F#66, G66, A66, B66, C67, D67, E67, F#67, G67, A67, B67, C68, D68, E68, F#68, G68, A68, B68, C69, D69, E69, F#69, G69, A69, B69, C70, D70, E70, F#70, G70, A70, B70, C71, D71, E71, F#71, G71, A71, B71, C72, D72, E72, F#72, G72, A72, B72, C73, D73, E73, F#73, G73, A73, B73, C74, D74, E74, F#74, G74, A74, B74, C75, D75, E75, F#75, G75, A75, B75, C76, D76, E76, F#76, G76, A76, B76, C77, D77, E77, F#77, G77, A77, B77, C78, D78, E78, F#78, G78, A78, B78, C79, D79, E79, F#79, G79, A79, B79, C80, D80, E80, F#80, G80, A80, B80, C81, D81, E81, F#81, G81, A81, B81, C82, D82, E82, F#82, G82, A82, B82, C83, D83, E83, F#83, G83, A83, B83, C84, D84, E84, F#84, G84, A84, B84, C85, D85, E85, F#85, G85, A85, B85, C86, D86, E86, F#86, G86, A86, B86, C87, D87, E87, F#87, G87, A87, B87, C88, D88, E88, F#88, G88, A88, B88, C89, D89, E89, F#89, G89, A89, B89, C90, D90, E90, F#90, G90, A90, B90, C91, D91, E91, F#91, G91, A91, B91, C92, D92, E92, F#92, G92, A92, B92, C93, D93, E93, F#93, G93, A93, B93, C94, D94, E94, F#94, G94, A94, B94, C95, D95, E95, F#95, G95, A95, B95, C96, D96, E96, F#96, G96, A96, B96, C97, D97, E97, F#97, G97, A97, B97, C98, D98, E98, F#98, G98, A98, B98, C99, D99, E99, F#99, G99, A99, B99, C100, D100, E100, F#100, G100, A100, B100, C101, D101, E101, F#101, G101, A101, B101, C102, D102, E102, F#102, G102, A102, B102, C103, D103, E103, F#103, G103, A103, B103, C104, D104, E104, F#104, G104, A104, B104, C105, D105, E105, F#105, G105, A105, B105, C106, D106, E106, F#106, G106, A106, B106, C107, D107, E107, F#107, G107, A107, B107, C108, D108, E108, F#108, G108, A108, B108, C109, D109, E109, F#109, G109, A109, B109, C110, D110, E110, F#110, G110, A110, B110, C111, D111, E111, F#111, G111, A111, B111, C112, D112, E112, F#112, G112, A112, B112, C113, D113, E113, F#113, G113, A113, B113, C114, D114, E114, F#114, G114, A114, B114, C115, D115, E115, F#115, G115, A115, B115, C116, D116, E116, F#116, G116, A116, B116, C117, D117, E117, F#117, G117, A117, B117, C118, D118, E118, F#118, G118, A118, B118, C119, D119, E119, F#119, G119, A119, B119, C120, D120, E120, F#120, G120, A120, B120, C121, D121, E121, F#121, G121, A121, B121, C122, D122, E122, F#122, G122, A122, B122, C123, D123, E123, F#123, G123, A123, B123, C124, D124, E124, F#124, G124, A124, B124, C125, D125, E125, F#125, G125, A125, B125, C126, D126, E126, F#126, G126, A126, B126, C127, D127, E127, F#127, G127, A127, B127, C128, D128, E128, F#128, G128, A128, B128, C129, D129, E129, F#129, G129, A129, B129, C130, D130, E130, F#130, G130, A130, B130, C131, D131, E131, F#131, G131, A131, B131, C132, D132, E132, F#132, G132, A132, B132, C133, D133, E133, F#133, G133, A133, B133, C134, D134, E134, F#134, G134, A134, B134, C135, D135, E135, F#135, G135, A135, B135, C136, D136, E136, F#136, G136, A136, B136, C137, D137, E137, F#137, G137, A137, B137, C138, D138, E138, F#138, G138, A138, B138, C139, D139, E139, F#139, G139, A139, B139, C140, D140, E140, F#140, G140, A140, B140, C141, D141, E141, F#141, G141, A141, B141, C142, D142, E142, F#142, G142, A142, B142, C143, D143, E143, F#143, G143, A143, B143, C144, D144, E144, F#144, G144, A144, B144, C145, D145, E145, F#145, G145, A145, B145, C146, D146, E146, F#146, G146, A146, B146, C147, D147, E147, F#147, G147, A147, B147, C148, D148, E148, F#148, G148, A148, B148, C149, D149, E149, F#149, G149, A149, B149, C150, D150, E150, F#150, G150, A150, B150, C151, D151, E151, F#151, G151, A151, B151, C152, D152, E152, F#152, G152, A152, B152, C153, D153, E153, F#153, G153, A153, B153, C154, D154, E154, F#154, G154, A154, B154, C155, D155, E155, F#155, G155, A155, B155, C156, D156, E156, F#156, G156, A156, B156, C157, D157, E157, F#157, G157, A157, B157, C158, D158, E158, F#158, G158, A158, B158, C159, D159, E159, F#159, G159, A159, B159, C160, D160, E160, F#160, G160, A160, B160, C161, D161, E161, F#161, G161, A161, B161, C162, D162, E162, F#162, G162, A162, B162, C163, D163, E163, F#163, G163, A163, B163, C164, D164, E164, F#164, G164, A164, B164, C165, D165, E165, F#165, G165, A165, B165, C166, D166, E166, F#166, G166, A166, B166, C167, D167, E167, F#167, G167, A167, B167, C168, D168, E168, F#168, G168, A168, B168, C169, D169, E169, F#169, G169, A169, B169, C170, D170, E170, F#170, G170, A170, B170, C171, D171, E171, F#171, G171, A171, B171, C172, D172, E172, F#172, G172, A172, B172, C173, D173, E173, F#173, G173, A173, B173, C174, D174, E174, F#174, G174, A174, B174, C175, D175, E175, F#175, G175, A175, B175, C176, D176, E176, F#176, G176, A176, B176, C177, D177, E177, F#177, G177, A177, B177, C178, D178, E178, F#178, G178, A178, B178, C179, D179, E179, F#179, G179, A179, B179, C180, D180, E180, F#180, G180, A180, B180, C181, D181, E181, F#181, G181, A181, B181, C182, D182, E182, F#182, G182, A182, B182, C183, D183, E183, F#183, G183, A183, B183, C184, D184, E184, F#184, G184, A184, B184, C185, D185, E185, F#185, G185, A185, B185, C186, D186, E186, F#186, G186, A186, B186, C187, D187, E187, F#187, G187, A187, B187, C188, D188, E188, F#188, G188, A188, B188, C189, D189, E189, F#189, G189, A189, B189, C190, D190, E190, F#190, G190, A190, B190, C191, D191, E191, F#191, G191, A191, B191, C192, D192, E192, F#192, G192, A192, B192, C193, D193, E193, F#193, G193, A193, B193, C194, D194, E194, F#194, G194, A194, B194, C195, D195, E195, F#195, G195, A195, B195, C196, D196, E196, F#196, G196, A196, B196, C197, D197, E197, F#197, G197, A197, B197, C198, D198, E198, F#198, G198, A198, B198, C199, D199, E199, F#199, G199, A199, B199, C200, D200, E200, F#200, G200, A200, B200, C201, D201, E201, F#201, G201, A201, B201, C202, D202, E202, F#202, G202, A202, B202, C203, D203, E203, F#203, G203, A203, B203, C204, D204, E204, F#204, G204, A204, B204, C205, D205, E205, F#205, G205, A205, B205, C206, D206, E206, F#206, G206, A206, B206, C207, D207, E207, F#207, G207, A207, B207, C208, D208, E208, F#208, G208, A208, B208, C209, D209, E209, F#209, G209, A209, B209, C210, D210, E210, F#210, G210, A210, B210, C211, D211, E211, F#211, G211, A211, B211, C212, D212, E212, F#212, G212, A212, B212, C213, D213, E213, F#213, G213, A213, B213, C214, D214, E214, F#214, G214, A214, B214, C215, D215, E215, F#215, G215, A215, B215, C216, D216, E216, F#216, G216, A216, B216, C217, D217, E217, F#217, G217, A217, B217, C218, D218, E218, F#218, G218, A218, B218, C219, D219, E219, F#219, G219, A219, B219, C220, D220, E220, F#220, G220, A220, B220, C221, D221, E221, F#221, G221, A221, B221, C222, D222, E222, F#222, G222, A222, B222, C223, D223, E223, F#223, G223, A223, B223, C224, D224, E224, F#224, G224, A224, B224, C225, D225, E225, F#225, G225, A225, B225, C226, D226, E226, F#226, G226, A226, B226, C227, D227, E227, F#227, G227, A227, B227, C228, D228, E228, F#228, G228, A228, B228, C229, D229, E229, F#229, G229, A229, B229, C230, D230, E230, F#230, G230, A230, B230, C231, D231, E231, F#231, G231, A231, B231, C232, D232, E232, F#232, G232, A232, B232, C233, D233, E233, F#233, G233, A233, B233, C234, D234, E234, F#234, G234, A234, B234, C235, D235, E235, F#235, G235, A235, B235, C236, D236, E236, F#236, G236, A236, B236, C237, D237, E237, F#237, G237, A237, B237, C238, D238, E238, F#238, G238, A238, B238, C239, D239, E239, F#239, G239, A239, B239, C240, D240, E240, F#240, G240, A240, B240, C241, D241, E241, F#241, G241, A241, B241, C242, D242, E242, F#242, G242, A242, B242, C243, D243, E243, F#243, G243, A243, B243, C244, D244, E244, F#244, G244, A244, B244, C245, D245, E245, F#245, G245, A245, B245, C246, D246, E246, F#246, G246, A246, B246, C247, D247, E247, F#247, G247, A247, B247, C248, D248, E248, F#248, G248, A248, B248, C249, D249, E249, F#249, G249, A249, B249, C250, D250, E250, F#250, G250, A250, B250, C251, D251, E251, F#251, G251, A251, B251, C252, D252, E252, F#252, G252, A252, B252, C253, D253, E253, F#253, G253, A253, B253, C254, D254, E254, F#254, G254, A254, B254, C255, D255, E255, F#255, G255, A255, B255, C256, D256, E256, F#256, G256, A256, B256, C257, D257, E257, F#257, G257, A257, B257, C258, D258, E258, F#258, G258, A258, B258, C259, D259, E259, F#259, G259, A259, B259, C260, D260, E260, F#260, G260, A260, B260, C261, D261, E261, F#261, G261, A261, B261, C262, D262, E262, F#262, G262, A262, B262, C263, D263, E263, F#263, G263, A263, B263, C264, D264, E264, F#264, G264, A264, B264, C265, D265, E265, F#265, G265, A265, B265, C266, D266, E266, F#266, G266, A266, B266, C267, D267, E267, F#267, G267, A267, B267, C268, D268, E268, F#268, G268, A268, B268, C269, D269, E269, F#269, G269, A269, B269, C270, D270, E270, F#270, G270, A270, B270, C271, D271, E271, F#271, G271, A271, B271, C272, D272, E272, F#272, G272, A272, B272, C273, D273, E273, F#273, G273, A273, B273, C274, D274, E274, F#274, G274, A274, B274, C275, D275, E275, F#275, G275, A275, B275, C276, D276, E276, F#276, G276, A276, B276, C277, D277, E277, F#277, G277, A277, B277, C278, D278, E278, F#278, G278, A278, B278, C279, D279, E279, F#279, G279, A279, B279, C280, D280, E280, F#280, G280, A280, B280, C281, D281, E281, F#281, G281, A281, B281, C282, D282, E282, F#282, G282, A282, B282, C283, D283, E283, F#283, G283, A283, B283, C284, D284, E284, F#284, G284, A284, B284, C285, D285, E285, F#285, G285, A285, B285, C286, D286, E286, F#286, G286, A286, B286, C287, D287, E287, F#287, G287, A287, B287, C288, D288, E288, F#288, G288, A288, B288, C289, D289, E289, F#289, G289, A289, B289, C290, D290, E290, F#290, G290, A290, B290, C291, D291, E291, F#291, G291, A291, B291, C292, D292, E292, F#292, G292, A292, B292, C293, D293, E293, F#293, G293, A293, B293, C294, D294, E294, F#294, G294, A294, B294, C295, D295, E295, F#295, G295, A295, B295, C296, D296, E296, F#296, G296, A296, B296, C297, D297, E297, F#297, G297, A297, B297, C298, D298, E298, F#298, G298, A298, B298, C299, D299, E299, F#299, G299, A299, B299, C300, D300, E300, F#300, G300, A300, B300, C301, D301, E301, F#301, G301, A301, B301, C302, D302, E302, F#302, G302, A302, B302, C303, D303, E303, F#303, G303, A303, B303, C304, D304, E304, F#304, G304, A304, B304, C305, D305, E305, F#305, G305, A305, B305, C306, D306, E306, F#306, G306, A306, B306, C307, D307, E307, F#307, G307, A307, B307, C308, D308, E308, F#308, G308, A308, B308, C309, D309, E309, F#309, G309, A309, B309, C310, D310, E310, F#310, G310, A310, B310, C311, D311, E311, F#311, G311, A311, B311, C312, D312, E312, F#312, G312, A312, B312, C313, D313, E313, F#313, G313, A313, B313, C314, D314, E314, F#314, G314, A314, B314, C315, D315, E315, F#315, G315, A315, B315, C316, D316, E316, F#316, G316, A316, B316, C317, D317, E317, F#317, G317, A317, B317, C318, D318, E318, F#318, G318, A318, B318, C319, D319, E319, F#319, G319, A319, B319, C320, D320, E320, F#320, G320, A320, B320, C321, D321, E321, F#321, G321, A321, B321, C322, D322, E322, F#322, G322, A322, B322, C323, D323, E323, F#323, G323, A323, B323, C324, D324, E324, F#324, G324, A324, B324, C325, D325, E325, F#325, G325, A325, B325, C326, D326, E326, F#326, G326, A326, B326, C327, D327, E327, F#327, G327, A327, B327, C328, D328, E328, F#328, G328, A328, B328, C329, D329, E329, F#329, G329, A329, B329, C330, D330, E330, F#330, G330, A330, B330, C331, D331, E331, F#331, G331, A331, B331, C332, D332, E332, F#332, G332, A332, B332, C333, D333, E333, F#333, G333, A333, B333, C334, D334, E334, F#334, G334, A334, B334, C335, D335, E335, F#335, G335, A335, B335, C336, D336, E336, F#336, G336, A336, B336, C337, D337, E337, F#337, G337, A337, B337, C338, D338, E338, F#338, G338, A338, B338, C339, D339, E339, F#339, G339, A339, B339, C340, D340, E340, F#340, G340, A340, B340, C341, D341, E341, F#341, G341, A341, B341, C342, D342, E342, F#342, G342, A342, B342, C343, D343, E343, F#343, G343, A343, B343, C344, D344, E344, F#344, G344, A344, B344, C345, D345, E345, F#345, G345, A345, B345, C346, D346, E346, F#346, G346, A346, B346, C347, D347, E347, F#347, G347, A347, B347, C348, D348, E348, F#348, G348, A348, B348, C349, D349, E349, F#349, G349, A349, B349, C350, D350, E350, F#350, G350, A350, B350, C351, D351, E351, F#351, G351, A351, B351, C352, D352, E352, F#352, G352, A352, B352, C353, D353, E353, F#353, G353, A353, B353, C354, D354, E354, F#354, G354, A354, B354, C355, D355, E355, F#355, G355, A355, B355, C356, D356, E356, F#356, G356, A356, B356, C357, D357, E357, F#357, G357, A357, B357, C358, D358, E358, F#358, G358, A358, B358, C359, D359, E359, F#359, G359, A359, B359, C360, D360, E360, F#360, G360, A360,

Horn in F Region 9 ATSSB Middle School Scales

1. Concert G (Written D) Major Scale



2. Concert C (Written G) Major Scale



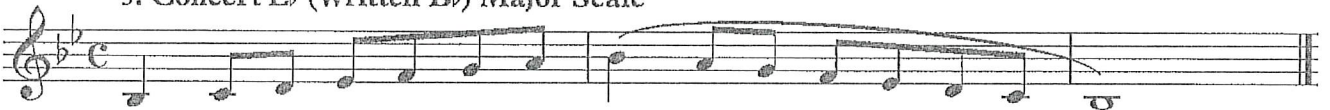
3. Concert F (Written C) Major Scale



4. Concert Bb (Written F) Major Scale



5. Concert Eb (Written Bb) Major Scale



6. Concert Ab (Written Eb) Major Scale



7. Concert Db (Written Ab) Major Scale



8. Chromatic Scale



Trombone Region 9 ATSSB Middle School Scales

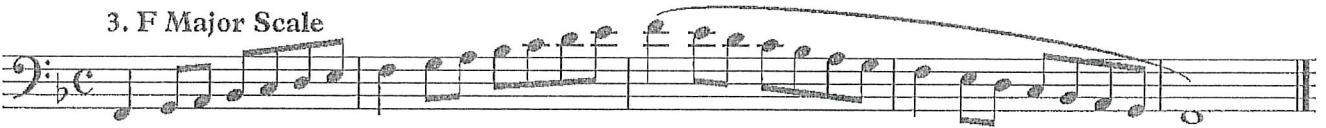
1. G Major Scale



2. C Major Scale



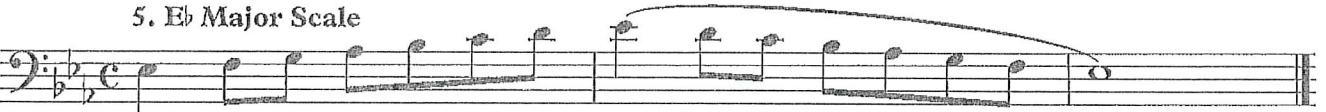
3. F Major Scale



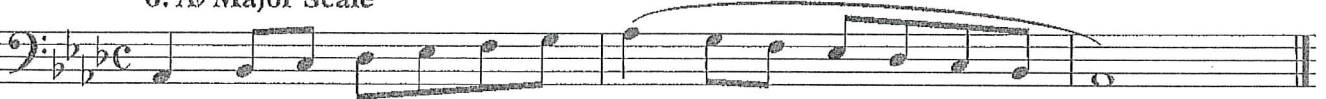
4. Bb Major Scale



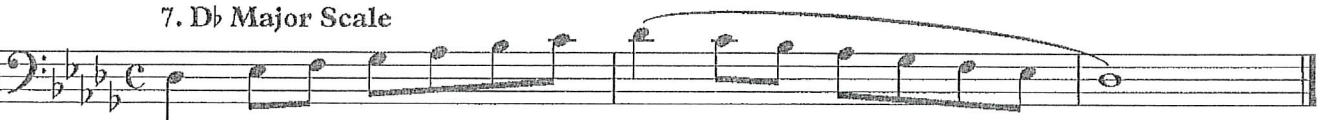
5. Eb Major Scale



6. Ab Major Scale



7. Db Major Scale



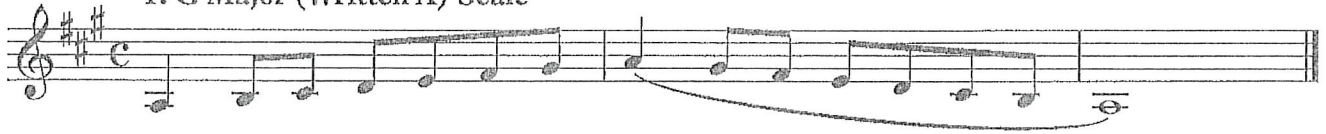
8. Chromatic Scale



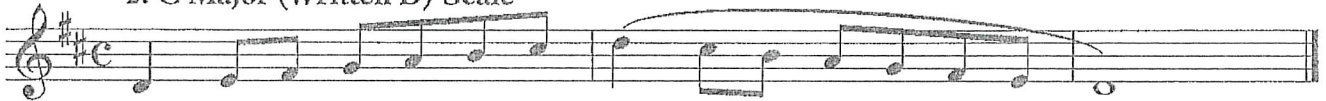
Region 9 ATSSB Middle School Scales

Euphonium (Treble Clef)

1. G Major (Written A) Scale



2. C Major (Written D) Scale



3. F Major (Written G) Scale



4. Bb Major (Written C) Scale



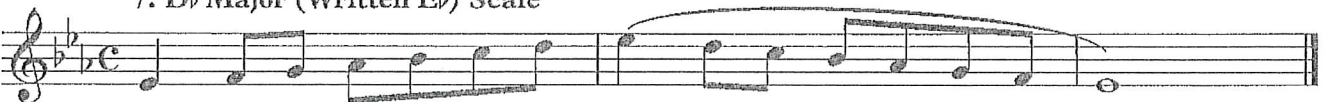
5. Eb Major (Written F) Scale



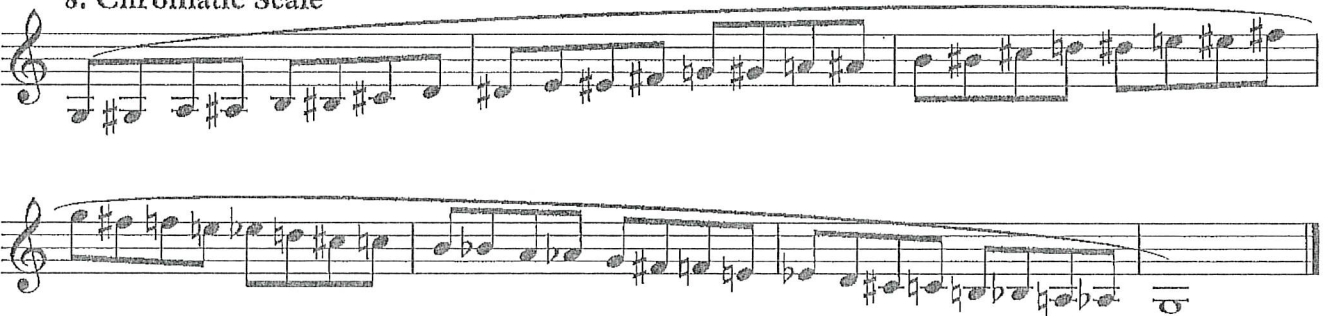
6. Ab Major (Written Bb) Scale



7. Db Major (Written Eb) Scale



8. Chromatic Scale



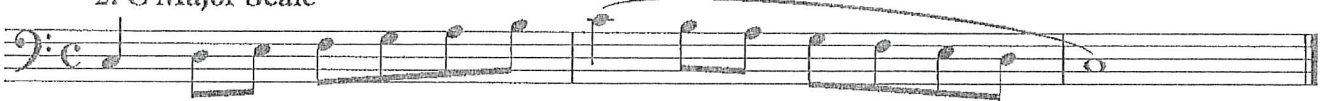
Region 9 ATSSB Middle School Scales

Euphonium (Bass Clef)

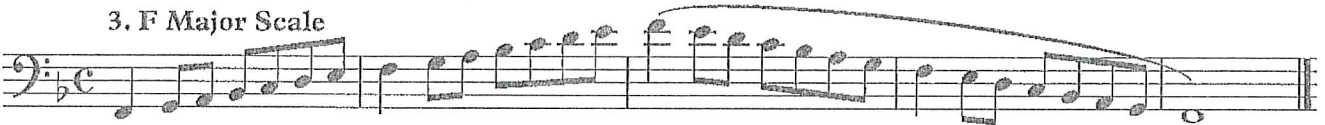
1. G Major Scale



2. C Major Scale



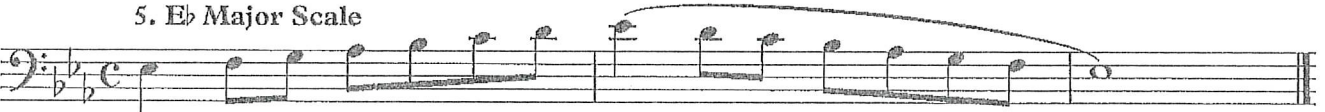
3. F Major Scale



4. Bb Major Scale



5. Eb Major Scale



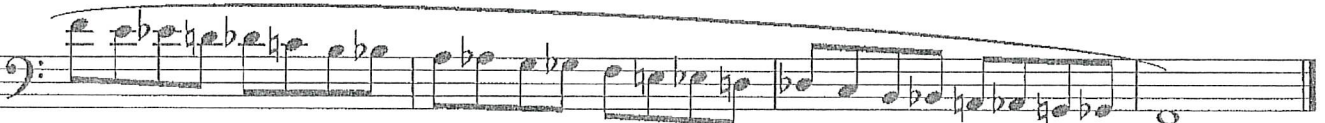
6. Ab Major Scale



7. Db Major Scale



8. Chromatic Scale



Tuba

Region 9 ATSSB Middle School Scales

1. G Major Scale

Musical notation for the G Major Scale in bass clef, common time. The scale is written in two lines: an ascending line and a descending line. The key signature has one sharp (F#). The ascending line starts on G2 and goes up to G3. The descending line starts on G3 and goes down to G2. A slur covers the entire scale.

2. C Major Scale

Musical notation for the C Major Scale in bass clef, common time. The scale is written in two lines: an ascending line and a descending line. The key signature has no sharps or flats. The ascending line starts on C2 and goes up to C3. The descending line starts on C3 and goes down to C2. A slur covers the entire scale.

3. F Major Scale

Musical notation for the F Major Scale in bass clef, common time. The scale is written in two lines: an ascending line and a descending line. The key signature has one flat (Bb). The ascending line starts on F2 and goes up to F3. The descending line starts on F3 and goes down to F2. A slur covers the entire scale.

4. Bb Major Scale

Musical notation for the Bb Major Scale in bass clef, common time. The scale is written in two lines: an ascending line and a descending line. The key signature has two flats (Bb, Eb). The ascending line starts on Bb2 and goes up to Bb3. The descending line starts on Bb3 and goes down to Bb2. A slur covers the entire scale.

5. Eb Major Scale

Musical notation for the Eb Major Scale in bass clef, common time. The scale is written in two lines: an ascending line and a descending line. The key signature has three flats (Bb, Eb, Ab). The ascending line starts on Eb2 and goes up to Eb3. The descending line starts on Eb3 and goes down to Eb2. A slur covers the entire scale.

6. Ab Major Scale

Musical notation for the Ab Major Scale in bass clef, common time. The scale is written in two lines: an ascending line and a descending line. The key signature has four flats (Bb, Eb, Ab, Db). The ascending line starts on Ab2 and goes up to Ab3. The descending line starts on Ab3 and goes down to Ab2. A slur covers the entire scale.

7. Db Major Scale

Musical notation for the Db Major Scale in bass clef, common time. The scale is written in two lines: an ascending line and a descending line. The key signature has five flats (Bb, Eb, Ab, Db, Gb). The ascending line starts on Db2 and goes up to Db3. The descending line starts on Db3 and goes down to Db2. A slur covers the entire scale.

8. Chromatic Scale

Musical notation for the Chromatic Scale in bass clef, common time. The scale is written in two lines: an ascending line and a descending line. The key signature has no sharps or flats. The ascending line starts on C2 and goes up to C3. The descending line starts on C3 and goes down to C2. A slur covers the entire scale.